

Zinnia Zahara® Series

(Zinnia marylandica)

Annuals Culture (revised 01/10/18)

Plug crop time: 3 weeks

Transplant to finish: Spring 8 to 9 weeks, Summer 5 to 6 weeks

- 20% larger flowers than competing varieties means more colour on the bench than any other disease-resistant zinnia...more retail impact...flower power that lasts in the landscape.
- Less care needed at retail for faster turns, less dump and better sell-through.
- Outstanding performer in heat, drought.

General Information

| Exposure | Bloom Season | Height | Spread | Spacing |
|----------|-----------------------------|-------------------------|-------------------------|------------------------|
| Sun | Spring, Late Spring, Summer | 12-18 in. (30-46 cm) | 12-18 in. (30-46 cm) | 8-10 in. (20-25 cm) |

Germination

| Seed Form | Recommended Plug Size | Seeds/Cell | Plug Crop Weeks | Days to Germinate | Initial Media pH/EC | Cover Seed |
|-----------|-----------------------|------------|-----------------|-------------------|-----------------------------|-------------|
| COT, RAW | 288 | 1 | 3 | 2-3 | 5.8-6.2 pH 0.75 mmhos/cm | Light cover |

Plug Production

| | Stage 1 | Stage 2 | Stage 3 | Stage 4 |
|--------------------|--|---|---|---|
| Moisture | Level 4 | Level 3-4 | Level 3-4 | Level 3 |
| Temperature | 68-73°F (20-23°C) | 70-75°F (21-24°C) | 70-75°F (21-24°C) | 65-70°F (18-21°C) |
| Light | Optional | 1,000-2,500 f.c. (10,800-26,900 Lux) | 1,000-2,500 f.c. (10,800-26,900 Lux) | 2,500-5,000 f.c. (26,900-53,800 Lux) |
| Fertilizer | Less than 100 ppm N - Less than 0.7 EC | | 100 to 175 ppm N - 0.7 to 1.2 EC | 100 to 175 ppm N - 0.7 to 1.2 EC |
| PGR | daminozide/1,250-2,500 ppm/Spray | | | |

Propagation Key Tips

Avoid excessive moisture on plants and flowers. Monitor for Botrytis.

Growing on to Finish

| Growing on Temperature | Target Media pH/EC | Fertilizer | Daylength |
|--|--------------------------------|----------------------------------|-----------------------|
| (day) 65-70°F (18-21°C) (night) 60-65°F (16-18°C) | 5.5-6.2 pH 1.2-1.5 mmhos/cm | 175 to 225 ppm N - 1.2 to 1.5 EC | Facultative Short Day |

Crop Scheduling

| Container Size | Plugs/Pot | Crop Time | Season | PGR |
|----------------|-----------|-------------|--------|----------------------------|
| 4"/4.5"/Quart | 1 (ppp) | 8-9 (weeks) | Spring | daminozide 3,500 ppm Spray |
| 5"/6"/1 Gallon | 3 (ppp) | 8-9 (weeks) | Spring | daminozide 3,500 ppm Spray |
| 4"/4.5"/Quart | 1 (ppp) | 5-6 (weeks) | Summer | daminozide 3,500 ppm Spray |
| 5"/6"/1 Gallon | 3 (ppp) | 5-6 (weeks) | Summer | daminozide 3,500 ppm Spray |

Common Problems

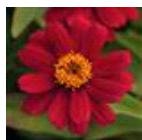
Insects: Monitor for Aphids early in production and Thrips during flowering. Disease: Avoid high humidity and condensation in the greenhouse, as these conditions are favorable for Botrytis and Powdery Mildew incidence.

Finishing Key Tips

Avoid excessive moisture on plants and flowers. Monitor for Botrytis.

NOTE: Growers should use the information presented here as guidelines only. PanAmerican Seed recommends that growers conduct a trial of products under their own conditions. Crop times will vary depending on the climate, location, time of year, and greenhouse environmental conditions. It is the responsibility of the grower to read and follow all the current label directions relating to the products. Nothing herein shall be deemed a warranty or guaranty by PanAmerican Seed of any products listed herein. PanAmerican Seed's terms and conditions of sale shall apply to all products listed herein.

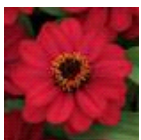
Variety Pictures



Cherry



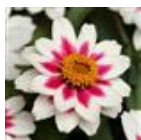
Fire



Raspberry



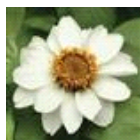
Red



Starlight Rose



Sunburst



White



Yellow



Bonfire Mixture



Mixture



Raspberry
Lemonade
Mixture

PanAmericanSeed™

PanAmerican Seed Co.
622 Town Road, West Chicago, Illinois, USA, 60185-2698
630 231-1400 Fax: 630 231-3609 PanAmSeed.com

™ denotes a trademark of and ® denotes a registered trademark of Ball Horticultural Company in the US. It may also be registered in other countries.
©2019 Ball Horticultural Company